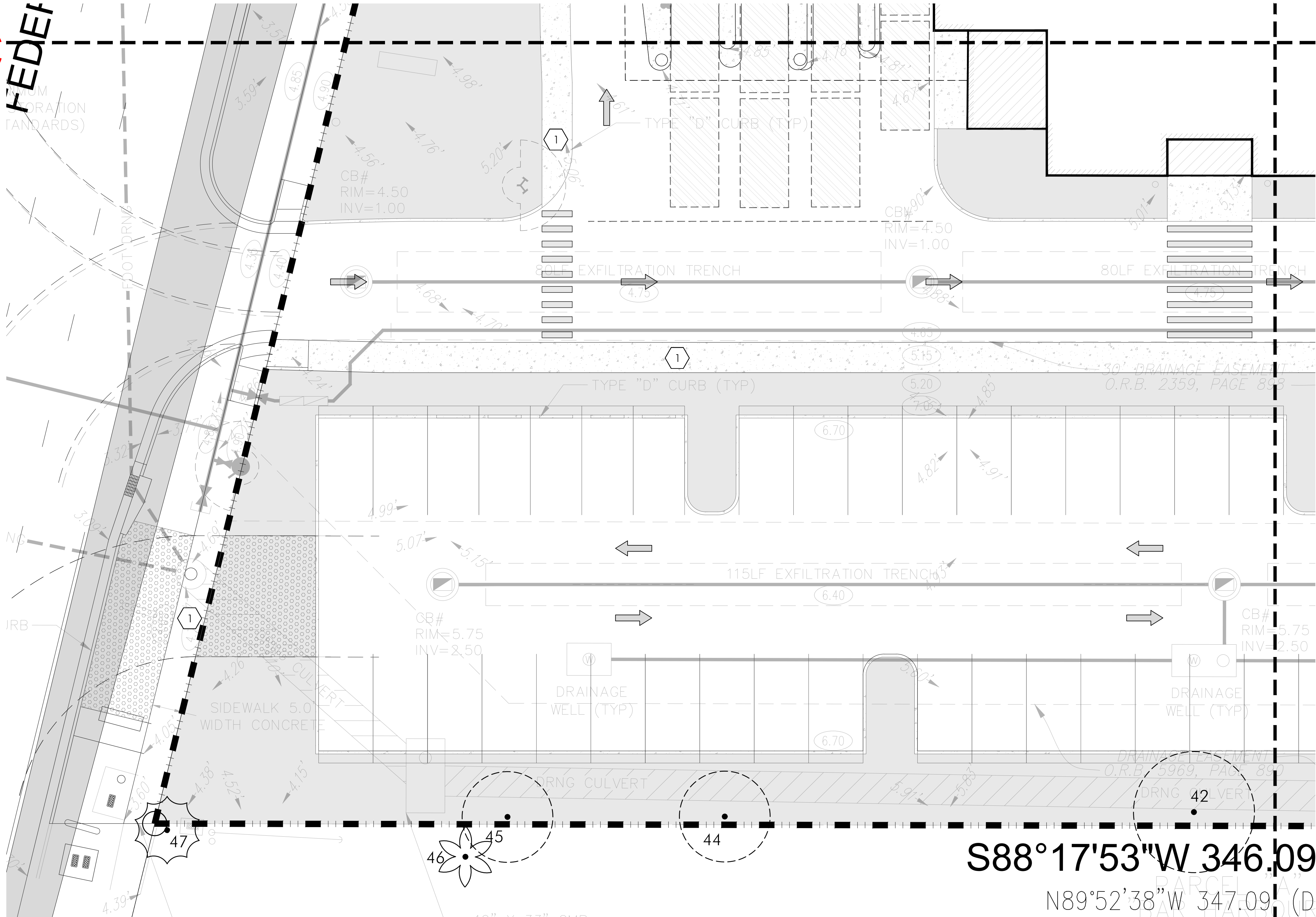


DRC

PZ24-12000027

07/02/2025

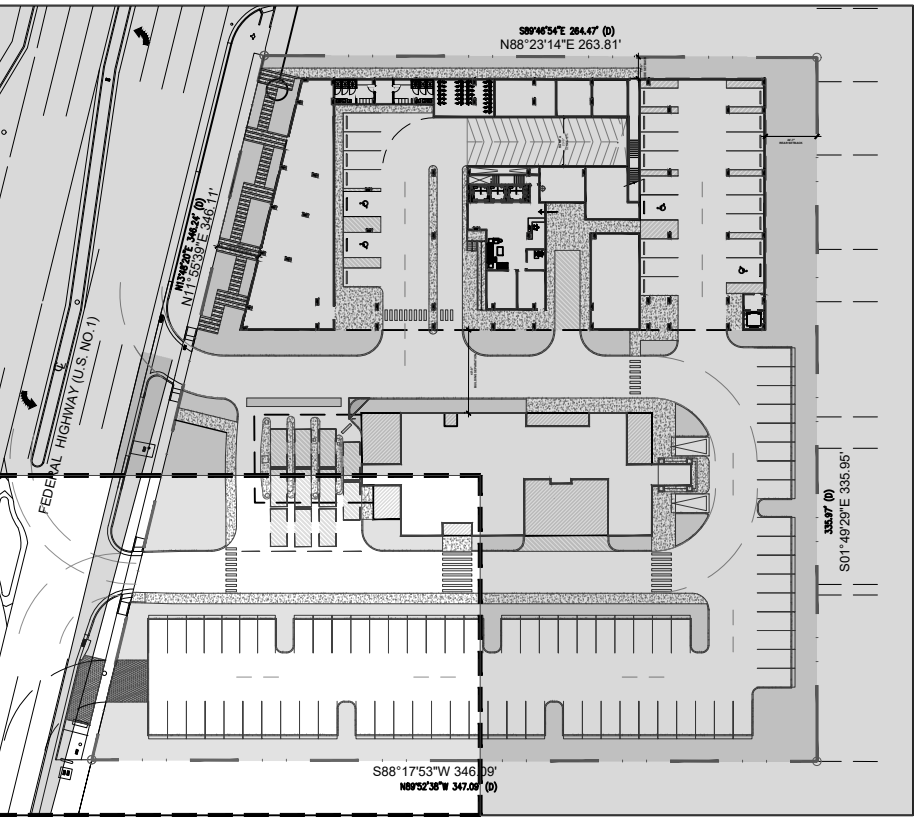
FEDEF  
STANDARD



S88°17'53"W 346.09

N89°52'38"W 347.09 (D

KEY:



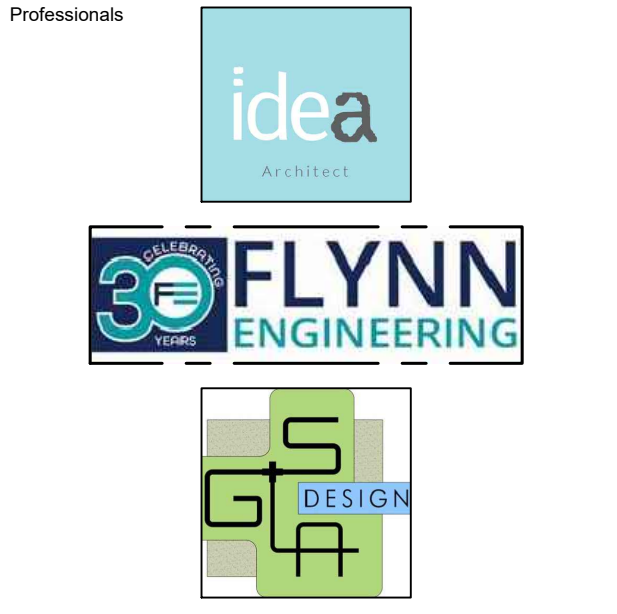
HARDSCAPE SCHEDULE					
KEY	DESCRIPTION	MANUFACTURER	COLOR	FINISH	SIZE
①	Concrete	Contractor	Grey	Standard	See civil
②	Concrete Paver	TBD	TBD	TBD	TBD



absolute-idea.com

CANAL PARK  
3323 NE 163rd Street, Suite 200 North Miami Beach, FL 33160  
305.792.0015 305.931.0279 info@absolute-idea.com

Ken Gardner  
FLA 1589  
TO THE BEST OF MY KNOWLEDGE, THE PLANS AND SPECIFICATIONS COMPLY WITH THE CITY OF MIAMI BUILDING CODE AND THE APPLICABLE PROFESSIONAL STANDARDS AS DETERMINED BY THE CODES AND REGULATIONS WITH THE BEST OF MY KNOWLEDGE.



REV.	DATE	DESCRIPTION
01	XX-XX-2024	D.R.C. SUBMITTAL

ALL MEASUREMENTS MUST BE VERIFIED BEFORE BEGINNING THE WORKS. NO MEASUREMENTS ARE TO BE SCALED DIRECTLY FROM THIS DRAWING.

Key section

PROGRESS SET

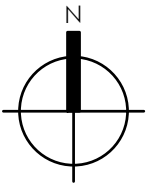
Client

VERA FUND  
NICK POLYUSHKIN  
& YURI KHARITONENKOV  
TEL: 305.833.3303

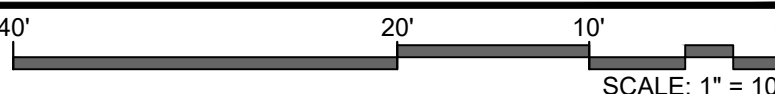
Project

1600 S FEDERAL HIGHWAY  
(MIXED-USE PROJECT)  
1600 SOUTH FEDERAL HIGHWAY,  
POMPANO BEACH, FL 33062

Title	
HARDSCAPE PLAN GROUND FLOOR	
Drawn GSLA	Field LANDSCAPE ARCH
Verified KG	Scale as shown
Approved KG	Date 10-09-2024
Project Manager KG	Dwg. no. L-103
Project 24-838	



HARDSCAPE PLAN - GROUND FLOOR



1  
L103